

# Building Community Between Police and Youth



**Afterschool Alliance**

Wednesday, August 16, 2017

# Housekeeping



## **Experiencing delays?**

Try closing out the other programs running on your computer.



## **Audio difficulties?**

Dial: 1-877-860-3058  
Code: 1135574



## **Question or comment?**

Use the group chat to interact with presenters and other participants.





# “Tools to Build On” Series

**GOAL: Equip afterschool & summer learning programs to help students work through these complex thoughts and emotions.**

- **April:** Supporting immigrant students & families
- **July:** Understanding and responding to incidents of bias
- **Upcoming:** Tough conversations with students



# Guest Speakers



**Darren Grimshaw**

*Major*

Burlington Police Department



**Marcel Braithwaite**

*Director of Community  
Engagement*

Police Athletic League, Inc.



**Jacalyn Swink**

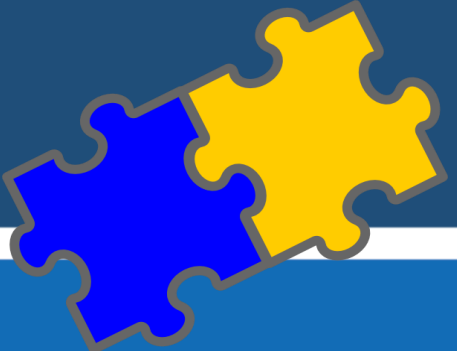
*Lead Teacher*

Burlington Community School  
District



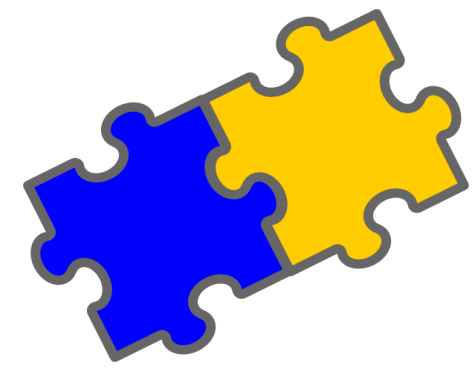
# Building and Sustaining Partnerships with Your Local PD

Jacalyn Swink & Darren Grimshaw



Afterschool Alliance

# After this session you should:



- Have a chance to self-reflect on your strengths and how you interact with others in your community.
- Be able to identify potential members of your local police department.
- Take your Partnership Action Plan back to your community to strengthen your current program.



# PIECES to the Puzzle

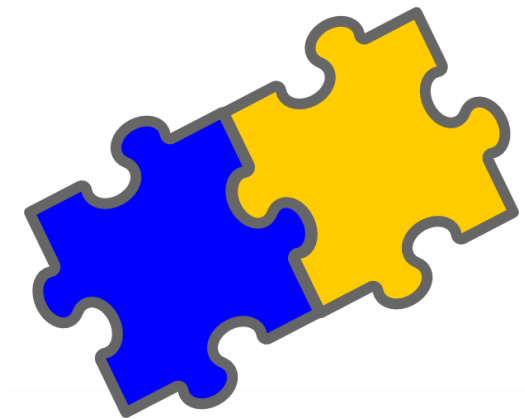
- Students
- Parents
- Teachers
- Community/Volunteers
- Business Partners
- Funding





# Local Police Department

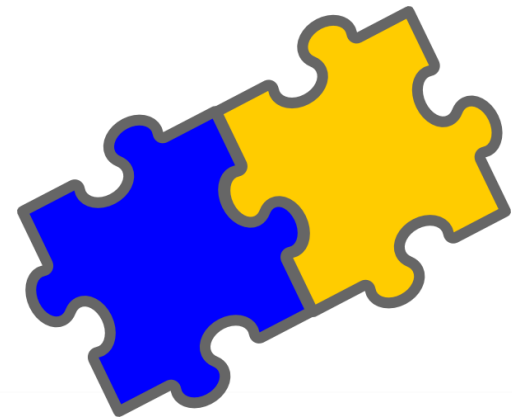
- Benefits to School
- Benefits to Community





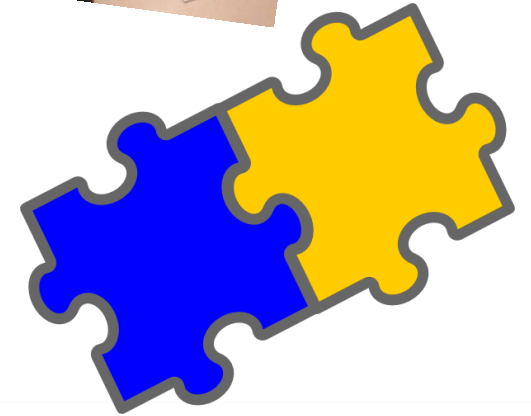
# 10 Steps to Build a Partnership with Your Local PD

1. Start small
2. Be an advocate
3. Sell your school district/program
4. Share, share, share (radio, newspapers, local organizations)
5. Open your doors
6. Make a list of needs
7. Have an “Open House”
8. Field trip
9. Follow up
10. How can we help you?



# Clubs

- Cooking
- Art
- Nature
- Foreign Language
- Building/Sewing
- Frisbee Golf
- Gaming
- Glee/Music
- Sports/Dodgeball







**DNR  
Officer**



**Invite  
teachers to  
help!**



**Call your local radio  
station.**



**Retired Military  
Officer**



**Look what I  
cooked  
with my  
grandma!**

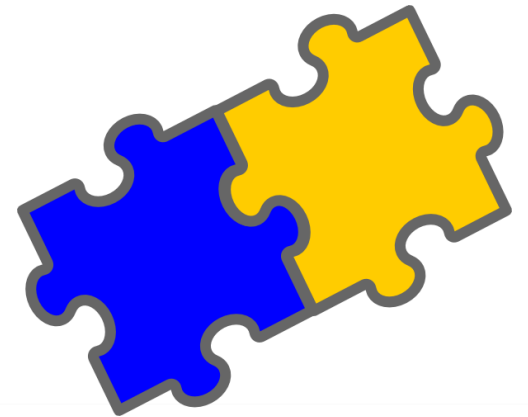


**Community  
Dinner Placemats**



# Why Should I become a Partner?

- Support Families ( Daycare )
- Improve Schools
- Support Youth mentor
- Enrich our Communities

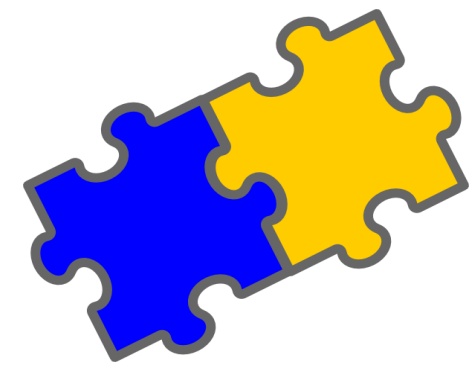


# How Does Building a Partnership Help My Organization?

1. Promotes personal growth and self esteem of employee.
2. Unites your organization with people from diverse backgrounds
3. Allows you the ability to instill an interest in your organization. ie: future employees
4. Provides your organization with the ability to create trust & express your organization's message.



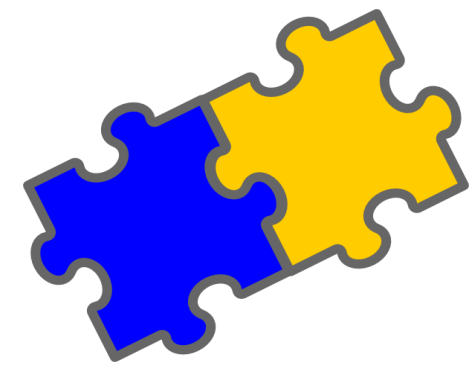
# After this session you should:



- Have a chance to self-reflect on your strengths and how you interact with others in your community.
- Be able to identify potential members of your local police department.
- Take your Partnership Action Plan back to your community to strengthen your current program.



# Contact



Major Darren Grimshaw  
Burlington Police Department  
(319)753-8352  
[grimshawd@burlingtoniowa.org](mailto:grimshawd@burlingtoniowa.org)

Jacalyn Swink  
Burlington Community School District  
(319) 752-8390 ext 3307  
[jacalyn.swink@bcsds.org](mailto:jacalyn.swink@bcsds.org)





# Police Athletic League

Marcel Braithwaite



Afterschool Alliance

# Cops and Kids



# Mission Statement

The Police Athletic League together with NYPD and the law enforcement community supports and inspires New York City youth to reach their full potential as productive members of society.



# Best practices in building relationships

- Consistent schedule
- Recruit local law enforcement
- Cultivate relationships with top officials
- Consider all aspects of law enforcement
- Involve law enforcement in planning/program design





# Recruit local law enforcement



# Cultivate relationship with top officials





# Consider all aspects of law enforcement





# Involve police in program design



# What is the impact on kids?

- Establishing traditions
- Positive relationships with youth
- Increased understanding of law enforcement role
- Exposure to career opportunities



# Establishing traditions





# Increased understanding of police



# Positive relationship with youth



# Career Opportunities





# Success Stories

Participant (Left)  
Staff Member (Right)





# How to build partnerships with police

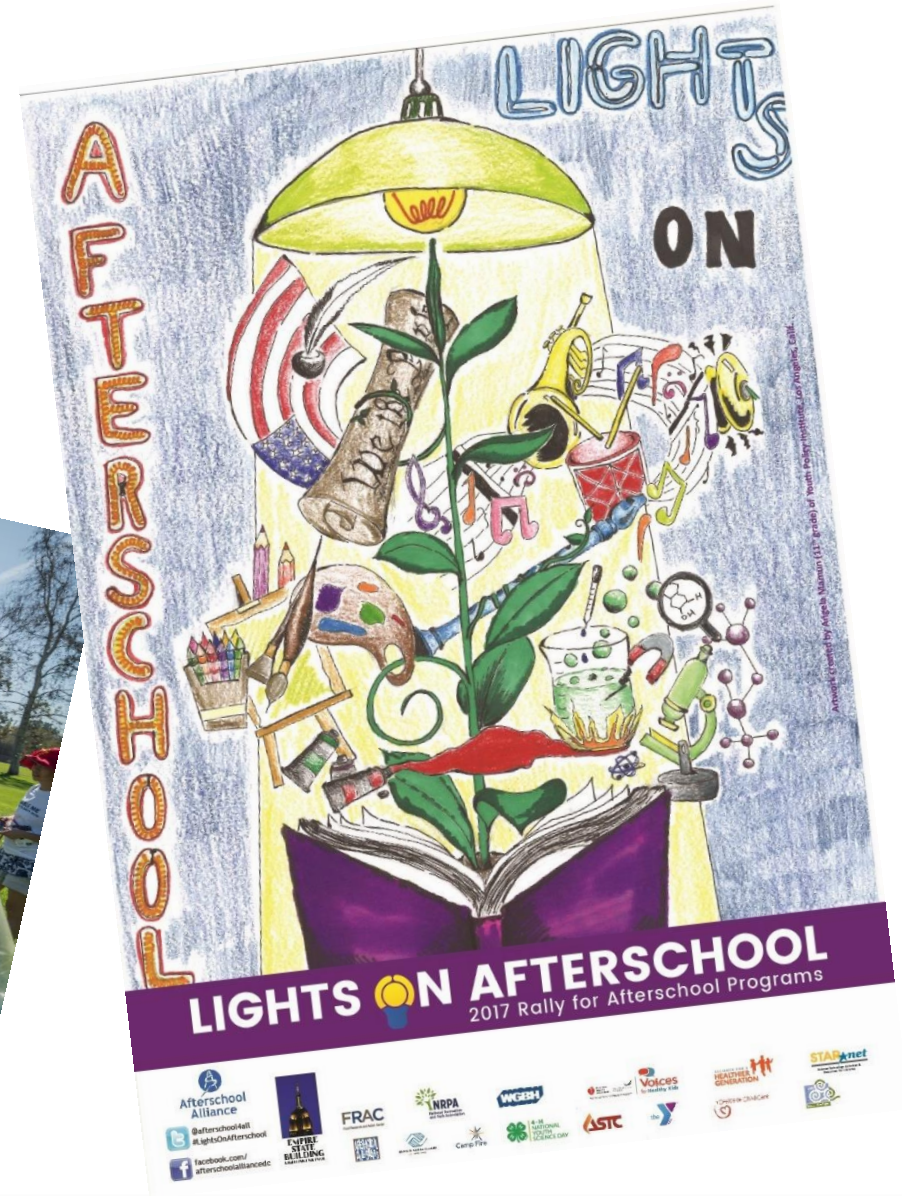
- Start at the top
- Build on existing traditions
- Maintain consistent commitment
- Leverage existing funding opportunities
- Respect law enforcement priorities
- Value each relationship equally





# LIGHTS ON AFTERSCHOOL

A PROJECT OF THE AFTERSCHOOL ALLIANCE



Afterschool Alliance

# Lights On Afterschool at PIECES

- Extended hours
- Invite parents/community
- Proclamation
- Entertainment
- Showcase School
- Student's Ownership
- 3 F's (family, food, fun)





# Lights On Afterschool – Junior Police



# Audience Q&A



# Thank you!

Take our survey



Afterschool Alliance